



19 Riesling Avenue, Glengowrie

1 SOLD, ONLY 1 LEFT. COMPLETION APRIL 2017!

This premium quality residence built by Arthouse Building Design is sure to impress. With over 270m2 of living space and high quality fittings throughout, a truly enviable lifestyle is on offer!

The large open plan living and modern kitchen with stainless steel appliances and soft close doors and cupboards is ideal for entertaining with direct access to a spacious alfresco area, featuring wide stacker sliding doors and overlooking the rear gardens.

Downstairs the home offers a central study. Guest powder room. The laundry room is spacious, offering ample storage and access to the side of the home.

The master bedroom is a generous size with a walk in dressing room and beautifully appointed ensuite with floor to ceiling tiles and a luxurious bath and free standing shower.

Bedroom two and three are generous in size both with built in robes.

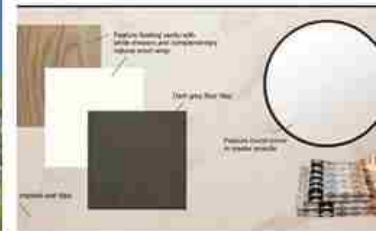
The main bathroom is fitted with gleaming tiles and quality fittings also consisting of in-built bath and shower.

The interior design is flawlessly presented with on trend style. Other features include: ducted reverse cycle air conditioning, landscaped gardens, double garage, instantaneous hot water system. External inclusions are pebbled concrete driveway, western red cedar shiplap front door.

All this located on a beautiful and quiet street in a highly sought after area. A short distance to Glenelg shopping precinct and beach, Marion shopping centre and transport. SA Aquatic centre, private and public schools all at your fingertips.

Don't miss out – get in early and finish this Arthouse by adding your own personal design of material, colours and finishes.

through



itchen



hall & Floors



\$725,000 - \$750,000

ID# 595

Open for Inspection

By Appointment

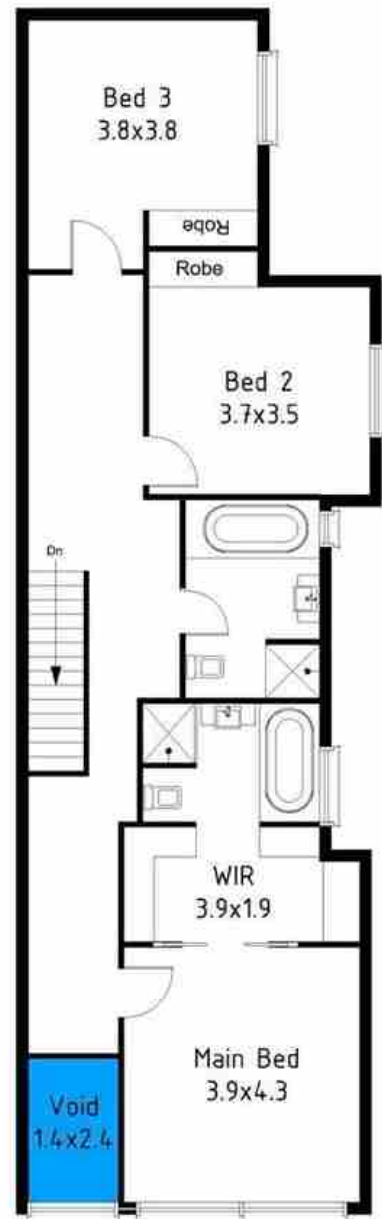


Luke Domingo

0413 248 429



Ground Floor



Upper Floor



Dimensions are approximate. All information endeavors to be as accurate as possible
For further details and specific content speak to the builder Arthouse Building by Design

17 Riesling Avenue Glengowrie

McCammon

Call us 8295 8885

RLA: 247 611

REAL ESTATE